



## PCD Series Double Acting Pneumatic Actuators

FOR BALL AND BUTTERFLY  
VALVES UP TO 18"

### KEY FEATURES

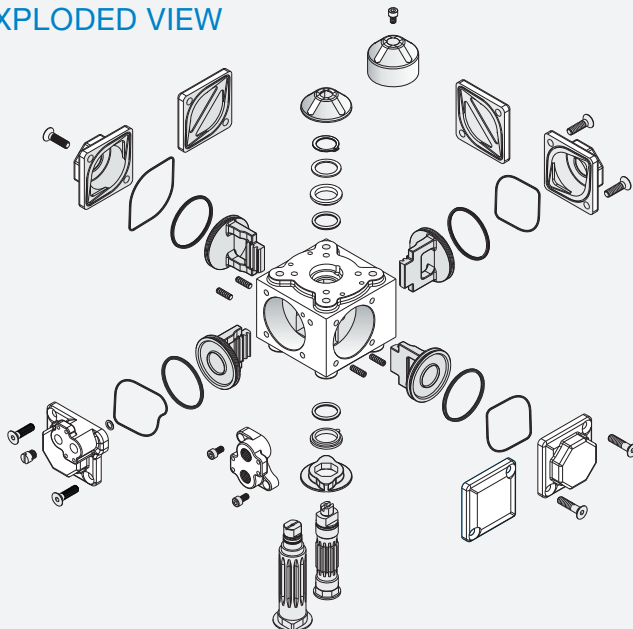
- Double Acting Air-to-Open and Close
- For All Sizes of Ball and Butterfly Valves
- Four-Piston Rack and Pinion Design
- Manual Override
- Compact, Lightweight
- Position Indicator
- Namur-Style Solenoid Mounting (Inlet/Outlet)
- Adjustable Travel Stops
- ISO 5211 Mounting Base

### OPTIONS

- Solenoid Valves with Optional Voltages
- Positioners
- Auxiliary Limit Switches
- Cycle Speed Controls

## TECHNICAL INFORMATION

### EXPLODED VIEW



### SPECIFICATIONS

<b>HOUSING</b>	Epoxy-Coated Aluminum
<b>OUTPUT SHAFT</b>	Plated Steel
<b>MINIMUM AIR PRESSURE</b>	80 PSI
<b>MAXIMUM AIR PRESSURE</b>	120 PSI
<b>CYCLE TIME</b>	Less Than One Second, Typical
<b>AIR PORT CONNECTIONS</b>	1/4" NPT

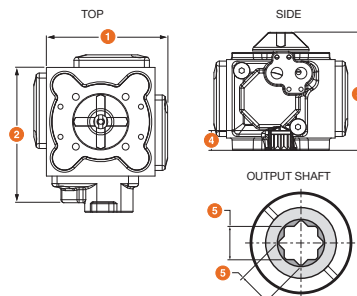
# PCD Series Double Acting Pneumatic Actuators

FOR BALL AND BUTTERFLY VALVES UP TO 18"

## TECHNICAL INFORMATION, CONTINUED

### DIMENSIONS

MODEL	1 in / mm	2 in / mm	3 in / mm	4 in / mm	5 in / mm	ISO 5211 MOUNT	AIR CONSUMPTION cu. in.
PCD 15	3.39 / 86	3.85 / 98	3.50 / 89	.53 / 13	.35 / 9	F05 (1.97)	5.5
PCD 20	4.03 / 102	4.60 / 117	3.96 / 101	.59 / 15	.43 / 11	F05 (1.97)	9.2
PCD 25	5.24 / 133	5.79 / 147	4.61 / 117	.77 / 20	.55 / 14	F07 (2.76)	20
PCD 35	7.15 / 182	7.94 / 202	6.10 / 155	1.02 / 26	.87 / 22	F10 (4.02)	49
PCD 45	8.70 / 220	9.65 / 245	7.24 / 184	1.30 / 33	1.06 / 27	F12 (4.92)	81
PCD 60	11.22 / 285	N/A	9.76 / 248	1.69 / 43	1.42 / 36	F14 (5.51)	195
PCD 75	13.46 / 342	N/A	11.81 / 300	1.69 / 43	1.42 / 36	F14 (5.51)	351



Dimensions are subject to change without notice – consult factory for installation information

### ACTUATOR SPECIFICATIONS

MODEL	PCD15	PCD20	PCD25	PCD35	PCD45	PCD60	PCD75
Torque Output (in-lbs) @ 80 PSI	172	311	639	1,848	3,622	8,585	15,856
Enclosure Material	Epoxy-Coated Aluminum						
Output Shaft	Plated Steel						
Air Port Connections	1/4" NPT						
Air Consumption (cu. in.)	5.5	9.2	20	49	81	195	351
Air Transfer	Internal						
Stroke Time (seconds)	0.2	0.4	0.7	1.0	1.5	2.5	4.0
Cycle Time	Under 1 Second Typical-Depends on Solenoid						
Minimum Air Pressure	80 PSI						
Maximum Air Pressure	120 PSI						
Operation	Rack and Pinion						
Weight (lbs / kg)	2.1 / 0.9	3.3 / 1.5	6.2 / 2.8	16 / 7.1	24 / 11	57 / 26	112 / 51

### VALVE SELECTION CHART

SIZE* in / DN	TB / TBH / CV / CVH SERIES BALL VALVES	TW/LA SERIES BALL VALVES	BYV/BYB SERIES BUTTERFLY VALVES
1/2 - 1-1/2 / 15 - 40	PCD15	PCD15	N/A
2 / 50	PCD15	PCD15	PCD20
2-1/2 / 65	PCD20	PCD20	PCD20
3 / 80	PCD20	PCD20	PCD20
4 / 100	PCD20	PCD20	PCD25
6 / 150	PCD20	PCD20	PCD25
8 / 200	N/A	N/A	PCD35
10 - 12 / 250 - 300	N/A	N/A	PCD45
14 / 350	N/A	N/A	PCD60
16 - 18 / 400 - 450	N/A	N/A	PCD75

\* Actuator size selections based on clean water at 70°F



Hayward is a registered trademark  
of Hayward Industries, Inc.  
© 2018 Hayward Industries, Inc.

USA: 1.888.429.4635 • Fax: 1.888.778.8410 • One Hayward Industrial Drive • Clemmons, NC 27012 • Email: hfcsales@hayward.com  
Canada: 1.888.238.7665 • Fax: 1.905.829.3636 • 2880 Plymouth Drive • Oakville, ON L6H 5R4 • Email: hflowcanada@hayward.com  
Visit us at: haywardflowcontrol.com